



Swimming pool,  
greenery and privacy  
provide this

## SOLUTION FOR SUBURBIA

THE CLUSTERING California town houses of *Passivity Green* reflect the single most significant trend in the way we live. Designed by architect Claude Oakland, built by Fielder Homes, Inc., they use our increasingly expensive and fast-disappearing suburban land sensibly and imaginatively. Homes show savings of common walls, yet provide country-club pleasures.

continued



Close-quarter living  
is spacious  
and luxurious in  
California's Pomeroy Green

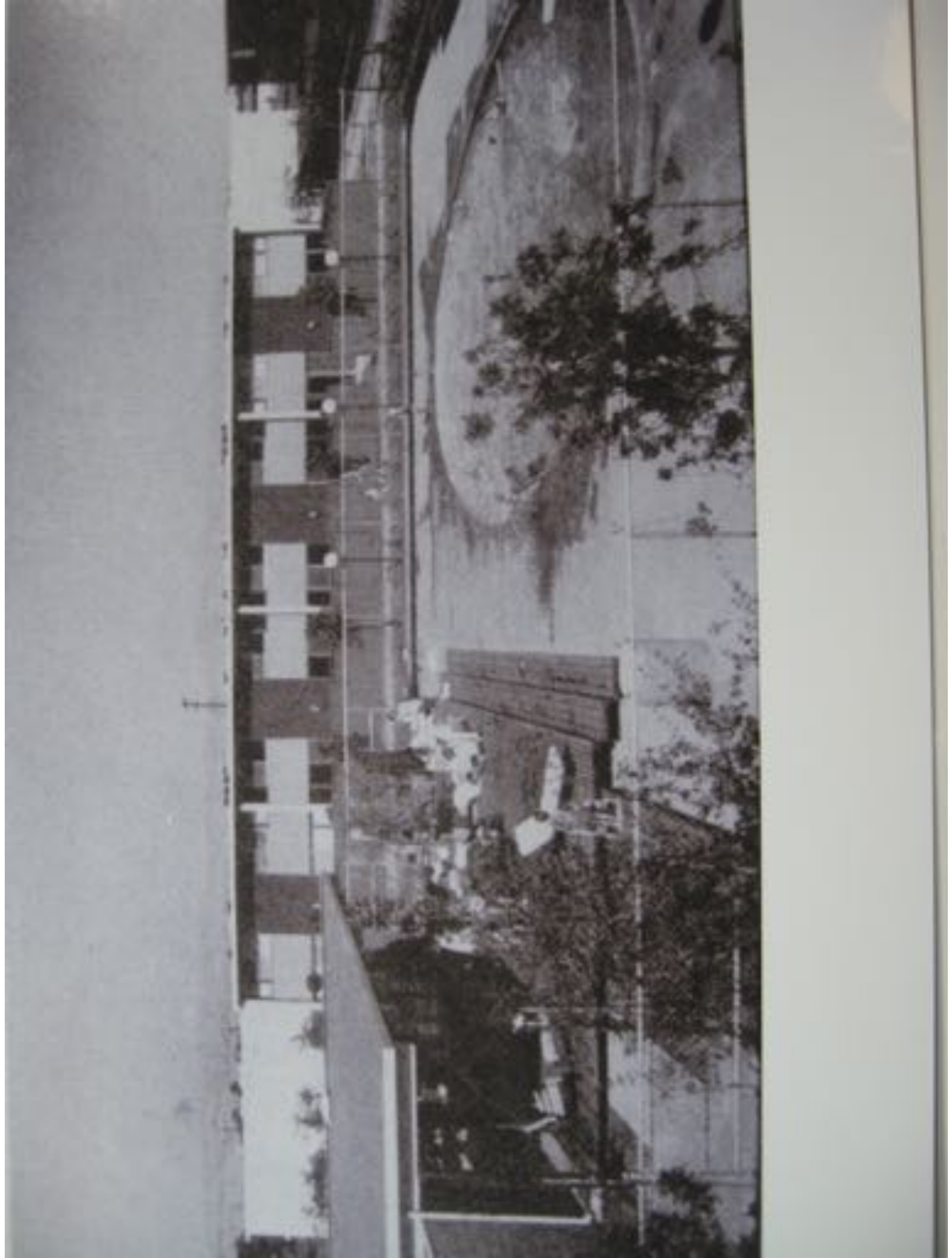


Each 4-bedroom, 2½-bathroom home has a light-filled living room (above), with sliding glass doors that open onto a private patio. Mrs. Frank La Morgan enjoys beer (right) for quiet hours or (left) her neighbor's barbecue. With all maintenance—down to moving to appliance repairs—included in the \$20-25,000 purchase price (under a \$200-per-month FHA mortgage), residents are free to enjoy leisure-time community activities or outside diversions, such as weekend cruises on a motorboat (below). This new concept of development living is such a success that a Pomeroy Two has been built, and substantial town houses are going up across the country.



Kitchens are carefully planned in relation to front patio and children's back playground.







*Kitchens are carefully planned in relation to front patio and children's back playyard.*





*This drawing shows the community's 78 two-story private homes. Grouped around 2½ acres of landscaped lawns and shared facilities, they are in Santa Clara County, southeast of San Francisco. Wide walkways (above), protected from traffic, insure safe passage, with frequent play platforms (above, right) for children on the way to the community center and pool (below).*

